

GLOBAL SPECIALIST FOR POWER BUSBARS

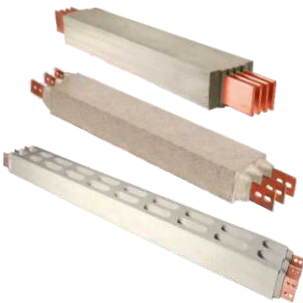
isobar



Noida - India



Boom-Belgium

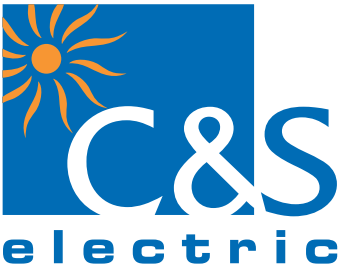


betobar

metabar



Haridwar-India



Power Busbars

We touch your electricity everyday!

C&S Electric Ltd. is a leading manufacturer of electrical and electronic equipment in India. It is India's largest exporter of industrial switchgear & power busbar products. C&S Electric products are used in applications ranging from power generation, transmission and distribution, protection and final consumption.

Power Busbar division of C&S Electric Ltd has evolved by continuously addressing the market needs over past 40 year. With the acquisition of Eta-com, Belgium having specialization in cast resin insulated Busway, the merger between the two companies resulted in making C&S as "Global Power Busbar specialist."

C&S Power Busbars products comply with relevant national & International standards and proven with the Installation references available throughout the continents finding its applications in Power generating stations, Process & manufacturing industries, Commercial & residential Buildings, Infrastructure establishment - Airports, Metros, Railways, Hospitals, Tunnels, Ports, Shopping centers, Exhibition centers, Warehouses, IT Parks, Data center solutions, Solar farms, Oil & Gas and Chemical Industry.

C&S Power Busbar Division with combination of supreme range, vast experience in R&D, engineering, state of art manufacturing plants, in-house testing facilities and strong project management is aimed to provide one stop solutions to user.

GLOBAL SPECIALIST FOR POWER BUSBARS



isobar Range offers - Isolated Phase busduct (IPB), segregated phase busduct (SPB) and Non-Segregated phase busduct (NSPB) ranging from 415V, 630A to 38kV, 30000A.

C&S is one of the global leaders in design, manufacturing, erection & commissioning of all variants of busducts for power generation upto 1000MW.

C&S has supplied more than 500 sets of isolated phase busducts with generating capacities of more than 150GW ranging from 80MW to 800MW.

Isobar busducts have been successfully type tested from renowned laboratories - KEMA-Netherlands / Czech Republic, EDF-France, CPRI-India.

Isolated Phase Busduct (IPB)-MV

Compliance of standard	IEC 62271 (1 & 200) / IS 8084 IEEE C37.23
Rated Continuous Current	100A-30,000A
Conductor	Aluminium*
Rated Operational Voltage (Ue)	11kV – 38kV
Enclosure Material	Aluminum Alloy
Rated Impulse Withstand Voltage (Uimp)	75kV - 170kV (1.2/50µs)
Degree of Protection	IP55 / IP65

*Copper Conductor available on request



Segregated Phase Busduct (SPB)**-MV

Compliance of standard	IEC 62271 (1 & 200) / IS 8084 / IEEE C37.23
Rated Continuous Current	630A - 5000A
Conductor	Aluminium / Copper
Rated Operational Voltage (Ue)	3.3kV - 33kV
Enclosure Material	Aluminum Alloy
Rated Impulse Withstand Voltage (Uimp)	40kV - 170kV (1.2/50µs)
Degree of Protection	IP55 / IP65

**Non-Segregated Phase Busduct (NSPB) - MV design available on request



Non Segregated Phase Busduct (NSPB)-LV

Compliance of standard	IEC 61439 (1&6) / IS 8623 (1&2)
Rated Continuous Current	630A - 6500A
Conductor	Aluminium / Copper
Rated Operational Voltage (Ue)	415V
Enclosure Material	Aluminum Alloy
Rated Impulse Withstand Voltage (Uimp)	12kV (1.2/50µs)
Degree of Protection	IP55 / IP65



Other Products

- Busbar Systems for DC application
- PTSP Cubicles
- Generator Terminal Enclosure
- Neutral Grounding Cubicles
- Line & Neutral Side Terminal Boxes
- Pressurization System for IPB's
- Hot Air Blowing Equipment
- Hot Dip Galvanized Steel Support Structures



betobar Range offers - Low Voltage and Medium Voltage cast resin Insulated Busway system ranging from 1000V to 17.5KV and 630A to 6300A.

Betobar-Cast Resin bustrunking consists of copper or aluminum busbars casted in homogeneous Insulating compound BIM, made of Epoxy resin mixed with special fillers under vacuum. This insulating compound has class "F" insulation with high mechanical and electrical strength, excellent resistance to atmospheric pollution & chemicals, resistance to fungi, Insects and rodents. Bustrunking section Joints are also casted with B.I.M at site, resulting in homogeneous insulation over the full run of bustrunking.

Betobar-Cast Resin bustrunking with low impedance, compact size, better aesthetics offers - highest degree of Ingress protection (IP68), high short circuit withstand capacity, resistance to flame propagation, resistance to fire penetration, circuit Integrity during fire, seismic resistance & UV resistance etc.

Betobar- Cast Resin bustrunking is highly safe and most reliable power distribution system for critical applications such as - Oil & Gas industry, explosive areas, humid and coastal area, chemical & dusty atmosphere and outdoor installations.

Cast Resin Insulated Busway (LA)-LV

Compliance of standard	IEC 61439 (1&6)
Conductor Material & Ratings	Copper 800A - 6300A Aluminium 630A - 5000A
Rated Operational Voltage (Ue)	1000V
Rated Impulse Withstand Voltage (Uimp)	12kV (1.2/50µs)
Degree of Protection	IP68
Mechanical Resistance	IK10



Cast Resin Insulated Busway (SH)-MV

Compliance of standard	IEC 62271 (1&201)
Conductor Material & Ratings	Copper 1300A - 1850A Aluminium 1350A - 1500A
Rated Operational Voltage (Ue)	3.6 kV - 7.2kV
Rated Impulse Withstand Voltage (Uimp)	12kV (1.2/50µs)
Degree of Protection	IP66 / IP67
Mechanical Resistance	IK10



Cast Resin Insulated Busway (PH)-MV

Compliance of standard	IEC 62271 (1&201)
Conductor Material & Ratings	Copper 1750A - 6100A Aluminium 1350A - 5000A
Rated Operational Voltage (Ue)	3.6 kV - 17.5kV
Rated Impulse Withstand Voltage (Uimp)	12kV (1.2/50µs)
Degree Of Protection	IP66 / IP67
Mechanical resistance	IK10



metabar Range offers Low Voltage Busbar Trunking System – Lighting Trunking, Compact Air Bustrunking, Track Busway & Sandwich Bustrunking ranging from 25A to 6300A.

Metabar bustrunking is a low impedance, compact size, safe and reliable power distribution system with flexibility in distribution, ease of installation, reusability & better aesthetics – makes a preferred choice for user.

Metabar bustrunking offers highest safety features - short circuit withstand capacity, resistance to flame propagation, fire penetration, circuit integrity during fire, seismic resistance & corrosion resistance etc.

Sandwich Bustrunking (SB)-LV

Compliance of standard	IEC 61439 (1&6)
Conductor Material & Ratings	Copper 630A - 6300A Aluminium 400A - 5000A
Rated Operational Voltage (Ue)	1000V
Rated Impulse Withstand Voltage (Uimp)	12kV (1.2/50µs)
Enclosure Material	G.I.
Degree Of Protection	IP54 / IP55*
Plug In Box	32A-630A

*IP65 & IP66 available on request



Compact Air Bustrunking (CB)-LV

Compliance of standard	IEC 61439 (1&6)
Conductor Material & Ratings	Copper 125A - 1250A Aluminium 200A - 800A
Rated Operational Voltage (Ue)	1000V
Rated Impulse Withstand Voltage (Uimp)	12kV (1.2/50µs)
Enclosure Material	G.I.
Degree Of Protection	IP54
Plug In Box	32A-400A



Lighting Trunking (LB)-LV

Compliance of standard	IEC 61439 (1&6)
Conductor Material & Ratings	Copper 25A, 40A
Rated Operational Voltage (Ue)	500V
Enclosure Material	Aluminium
Degree Of Protection	IP54 / IP55
Plug In Box	Upto 16A



Track Busway (MB)-LV New

Compliance of standard	IEC 61439 (1&6)
Conductor Material & Ratings	Copper 250A - 400A
Rated Operational Voltage (Ue)	690V
Enclosure Material	Aluminium
Degree Of Protection	IP42
Plug In Box	Upto 63A



isobar

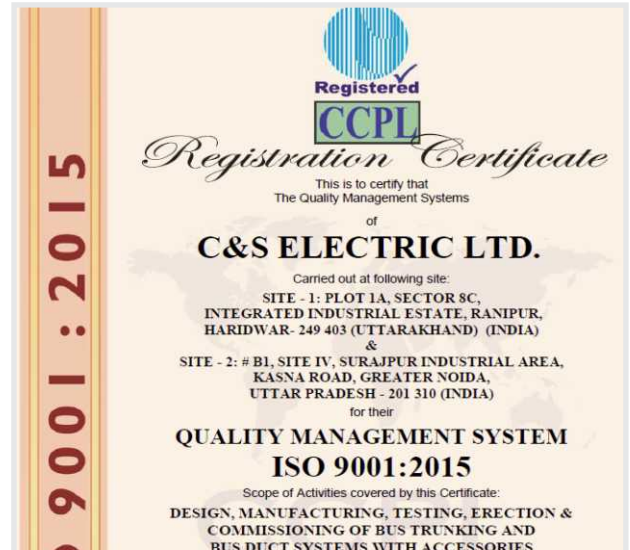
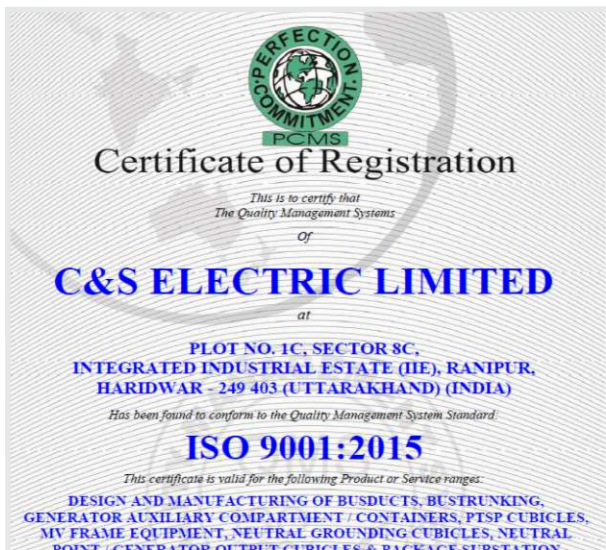


betobar



metabar





14001:2015



9001:2015



18001:2017



● C&S Etacom Installations

*This map is only for pictorial representation and to be used.



GLOBAL SPECIALIST FOR POWER BUSBARS



Corporate Office:

C&S Electric Limited

222, Okhla Industrial Estate, Phase-III
New Delhi-110 020, India
Tel.: +91 11 3384 9000-09
Fax: +91 11 2684 7342

Domestic

Regional Office:

Northern Region / Export

222, Okhla Industrial Estate, Phase-III
New Delhi-110 020, India
Tel.: +91 11 3384 9000-09
Fax: +91 11 2684 7342
email : powerbusbars@cselectric.co.in

Southern Region

#N607, North Block, Rear Wing,
Manipal Center, 47, Dickenson Road,
Bengaluru -560 042, Karnataka, India
Tel.: +91-80-30570359, 340
Fax: +91-80- 25584839
email: powerbusbars@cselectric.co.in

Eastern Region

#24, Park Street, Development House,
4th Floor, Kolkata -700016
West Bengal, India
Tel.: +91-033-40011417
Fax: +91-033-22275849/40011417
email: powerbusbars@cselectric.co.in

Western Region

A-301/302, 3rd Floor, Nav Bharat Estate
Zakaria Bunder Rd., Sewri (W)
Mumbai - 400015, Maharashtra, India
Tel: +91-22-24114727 - 28
Fax: +91-22-241137858, 24114704
email: powerbusbars@cselectric.co.in

Works:

Plant -I

Plot No. 1A, Sector 8C,
Integrated Industrial Estate
(SIDCUL), Ranipur, Haridwar
Uttarakhand - 249403, India

Plant -II

Plot No. 1C, Sector 8C,
Integrated Industrial Estate
(SIDCUL), Ranipur, Haridwar
Uttarakhand - 249403, India

Overseas

Office:

Eta-com B NV/SA

Scheldeweg 4
2850, Boom
Belgium
Tel.: +32-3-880.64.00
Fax: +32-3-844.42.50
email: info@etacom.be

Eta-com BV

Zwarte Zee 2-6,
3144, DE MAASSLUIS,
The Netherlands
Tel.: +31-1059-16422
Fax: +31-1059-20673
email: info@etacom.be

Eta-com UK Preedcrete Ltd.

Unit 19 /20, Horsham Court,
City Business Centre, 6, Brighton Road,
HORSHAM, West Sussex, RH13 5BB,
United Kingdom
Tel.: +44-1-403265767
Fax: +44-1-403254131
email: info@etacom.be

Middle East (FZE) Office:

PO Box 124999
Saif Zone Office, X2-13
Sharjah - UAE
Tel.: +971 65579786
Fax: +971 65579786
email: info@etacom.be

Works:

Eta-com B NV/SA

Scheldeweg 4
2850, Boom, Belgium
Tel.: +32-3-880.64.00
Fax: +32-3-844.42.50

www.cselectric.co.in
www.etacomcs.com



We touch your electricity everyday!

PB/JAN/2020