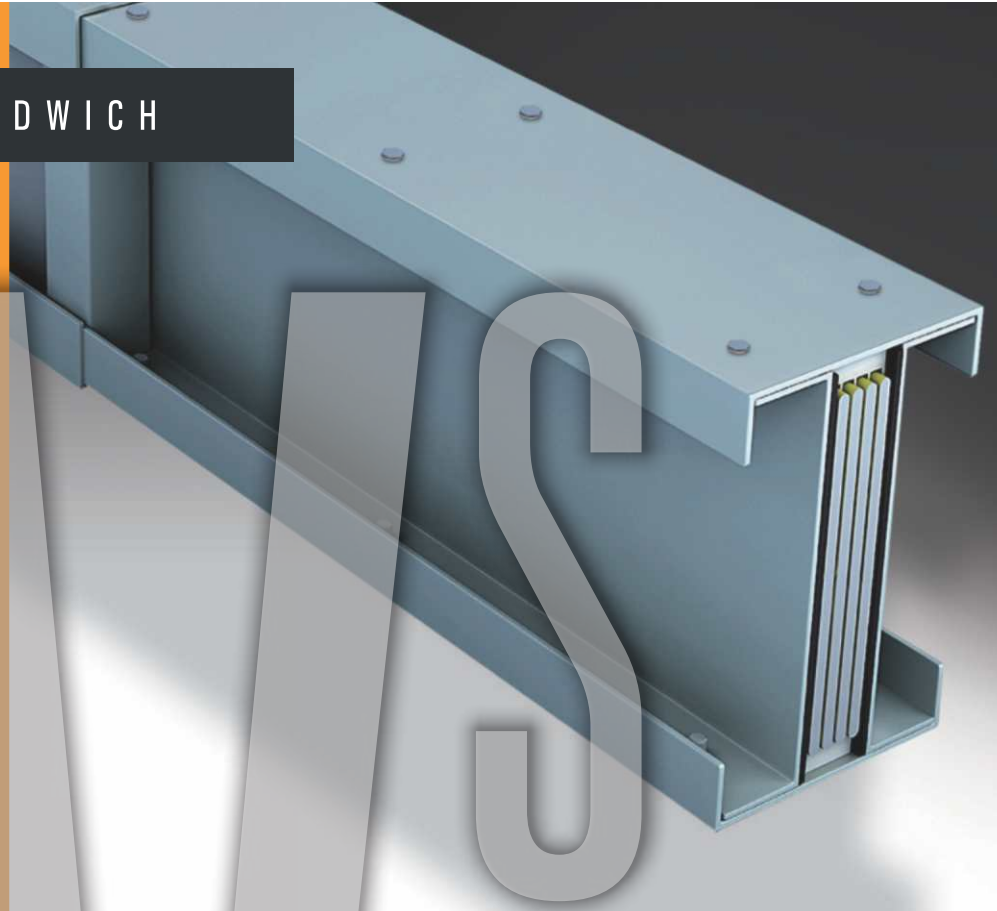


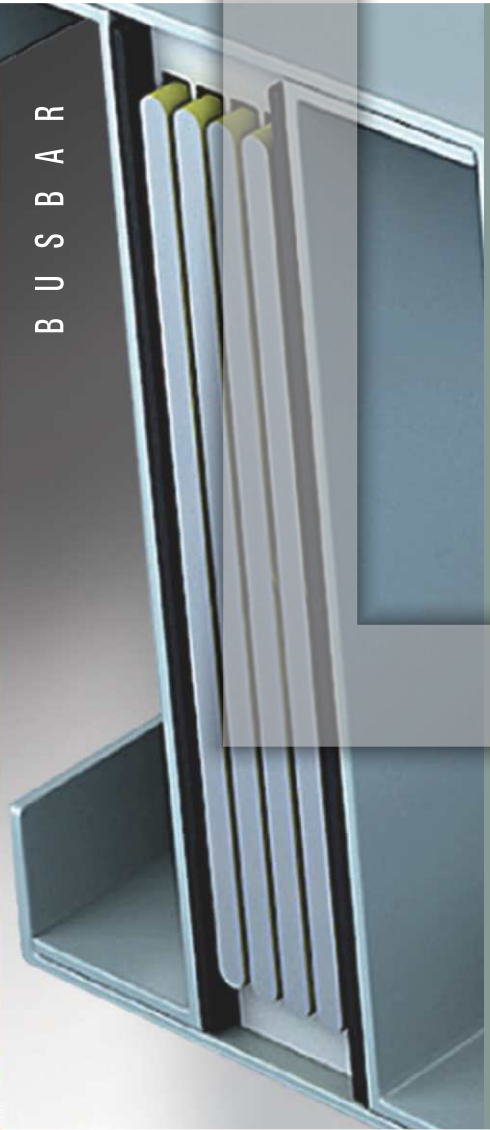
LOW VOLTAGE SANDWICH

S Y S T E M S



Sandwich IP55

B U S B A R



 **ENTRACO BKS**  
BUS DUCTS PVT. LTD.

# we energize your world

EntracoBKS bus ducts are proud to present the cutting edge Swiss technology bus duct that is second to none in the world. Our approach to design is revealed in the beautiful simplicity of our products.

EntracoBKS bus ducts are the lifeline for every major project from Residential towers to Nuclear plants, IT Parks to Chemical factories, Manufacturing units to Oil refineries, Airports to Seaports, Hospitals to Commercial Malls and much more.

EntracoBKS team and its bus ducts work with the stakeholders to make these projects successful to its fullest potential. Our approach is revealed in the beautiful simplicity of our products that are smart, easy to install and maintenance free.

*Let us know how we can help you.*

**ASTA**  
CERTIFIED



AI

3P+100%PEN  
3P+100%N+100%PE  
3P+200%N+100%PE

### LV-S with ALUMINIUM Conductors

Rated Current (In)	Amps	400	630	800	1000	1250	
Product Code		LV-S	LV-S	LV-S	LV-S	LV-S	
		SB	SB	SB	SB	SB	
		60A-3	060A-4	060A-6	080A	120A	

### General Characteristics

Reference Standards		IEC 61439-(6)					
Degree of protection (IEC-60529)		Class IP55					
Pollution degree		III/3					
Overall Height (H)	mm	90	90	90	110	150	
Overall Wide(W) 4cond./5cond.	mm	120/130	120/130	120/130	120/130	120/130	
Rated operation Voltage Ui	V	AC 1000V					
Rated Insulation Voltage Ue	V	DC/AC1000V					
Frequency	Hz	50-60Hz					
Rated short-time with stand current ICW	kA/1sec.	12	12	27	53	53	
Rated impulse with stand current IPk	kA	24	24	56	117	117	
Conductor material		AL EN AW 6060-T5 tin plated					
Cross section of active conductor	sqmm	178	237	352	472	592	
Cross section of Neutral conductor	sqmm	178	237	352	472	592	
Cross section of PE conductor	sqmm	178	237	352	472	592	

### SC-R with ALUMINIUM Conductors

Rated Current (In)	Amps	1600	2000	2500	3200	4000	5000
Product Code		LV-S	LV-S	LV-S	LV-S	LV-S	LV-S
		SB	SB	SB	DB	DB	DB
		160A	200A	240A	160A	200A	240A

### General Characteristics

Reference Standards		IEC 61439-(6)					
Degree of protection (IEC-60529)		Class IP55					
Pollution degree		III/3					
Overall Height (H)	mm	190	230	270	420	500	580
Overall Wide (W) 4cond./5cond.	mm	120/130	120/130	120/130	120/130	120/130	120/130
Rated operation Voltage Ui	V	AC 1000V					
Rated Insulation Voltage Ue	V	DC/AC1000V					
Frequency	Hz	50-60Hz					
Rated short-time with stand current ICW	kA/1sec.	65	65	65	80	80	80
Rated impulse with stand current IPk	kA	143	143	143	176	176	176
Conductor material		AL EN AW 6060 -T5 tin plated					
Cross section of active conductor	sqmm	952	1192	1432	1904	2384	2864
Cross section of Neutral conductor	sqmm	952	1192	1432	1904	2384	2864
Cross section of PE conductor	sqmm	952	1192	1432	1904	2384	2864

Cu

3P+100%PEN  
3P+100%N+100%PE  
3P+200%N+100%PE

### LV-S with COPPER Conductors

Rated Current (In)	Amps	630	800	1000	1250	1400	1600
Product Code		LV-S	LV-S	LV-S	LV-S	LV-S	LV-S
		SB	SB	SB	SB	SB	SB
		060K-03	060K-04	060K-06	080K	0100K	0120K

### General Characteristics

Reference Standards	IEC 61439-(6)						
Degree of protection (IEC-60529)	Class IP55						
Pollution degree	III/3						
Overall Height (H)	mm	90	90	90	110	130	150
Overall Wide (W) 4cond./5cond.	mm	120/130	120/130	120/130	120/130	120/130	120/130
Rated operation Voltage Ui	V	AC 1000V					
Rated Insulation Voltage Ue	V	DC/AC 1000V					
Frequency	Hz	50-60Hz					
Rated short-time with stand current ICW	kA/1sec.	23	23	36	53	53	65
Rated impulse with stand current IPk	kA	48	48	80	117	117	143
Conductor material	CU OEF CW 009A						
Cross section of active conductor	sqmm	178	237	352	472	592	712
Cross section of Neutral conductor	sqmm	178	237	352	472	592	712
Cross section of PE conductor	sqmm	178	237	352	472	592	712

### LV-S with COPPER Conductors

Rated Current (In)	Amps	2000	2500	3200	4000	5000	6300
Product Code		LV-S	LV-S	LV-S	LV-S	LV-S	LV-S
		SB	SB	SB	DB	DB	DB
		160K	200K	240K	160K	200K	240K

### General Characteristics

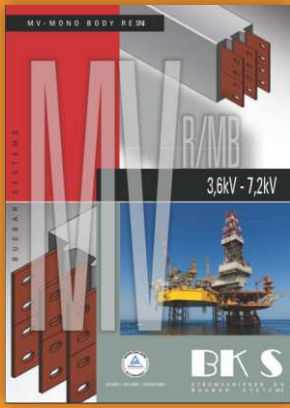
Reference Standards	IEC 61439-(6)						
Degree of protection (IEC-60529)	Class IP55						
Pollution degree	III/3						
Overall Height (H)	mm	190	230	270	380	460	540
Overall Wide (W) 4cond./5cond.	mm	120/130	120/130	120/130	120/130	120/130	120/130
Rated operation Voltage Ui	V	AC1000V					
Rated Insulation Voltage Ue	V	DC/AC1000V					
Frequency	Hz	50-60Hz					
Rated short-time with stand current ICW	kA/1sec.	65	80	80	80	80	80
Rated impulse with stand current IPk	kA	143	176	176	176	176	176
Conductor material	CU OEF CW009A						
Cross section of active conductor	sqmm	952	1192	1432	1904	2384	2864
Cross section of Neutral conductor	sqmm	952	1192	1432	1904	2384	2864
Cross section of PE conductor	sqmm	952	1192	1432	1904	2384	2864



## MAJOR ADVANTAGES

- Extruded Aluminum enclosure
- Compact space saving
- Enclosure uses as earth
- Withstand high short circuit
- Low voltage drop
- Higher mechanical strength
- Low maintenance
- Low impedance

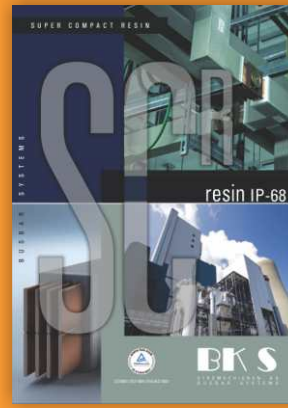
All busbar are type tested to international standards in official laboratories.



MV-R/MB



MV-R



SC-R



CD-K

## LOW VOLTAGE SANDWICH

 **ENTRACO BKS**  
BUS DUCTS PVT. LTD.

INDIA OFFICE  
A 36/B NICE Area, MIDC Satpur,  
Nashik, Maharashtra  
INDIA 422007  
Tel : +91 253 2355083, 6698128  
Mob. : +91 9822613563  
e-Mail: [info@entracobks.com](mailto:info@entracobks.com)  
[www.entracobks.com](http://www.entracobks.com)